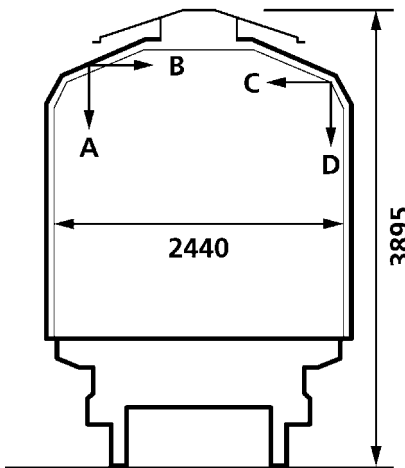
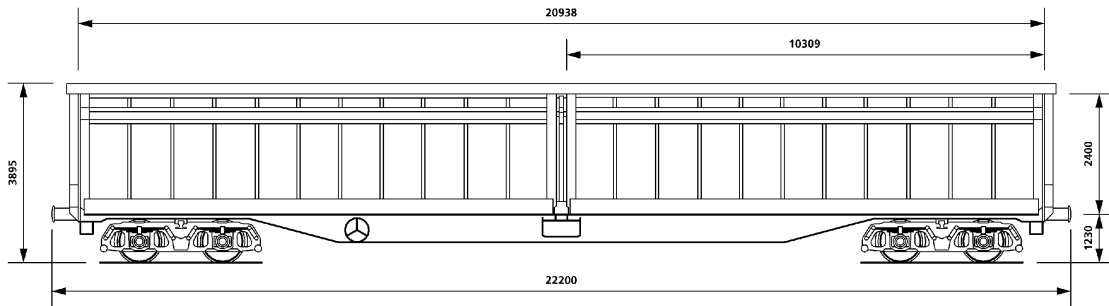


These wagons were constructed by LHB in Germany. The wagons are internationally registered in the UK and Germany and meet all existing RIV / UIC regulations. They are also approved for Channel tunnel operation. The wagons have been designed primarily for the conveyance of palletised goods but can accommodate most forms of general cargo.



Wagon Data

Overall length (over buffers)	22.200mm
Overall height	3.895mm
Loading length	20.938mm
Loading width	2.440mm
Loading area	51m²
Loading capacity	117m³
Length of door opening	10.309mm
Height of door opening	2.400mm
Platform height	1.230mm
Tare weight	27.000 kgs
Payload (axle load 22.5 tonnes)	63.000 kgs
Minimum curve	35 metres
Maximum speed	100 kph

Refer to separate table for height and width dimensions

Payload	A	B	C	D	
S	37	45	55	63	**
120	0.0				

GE122CT

Habfis /F3