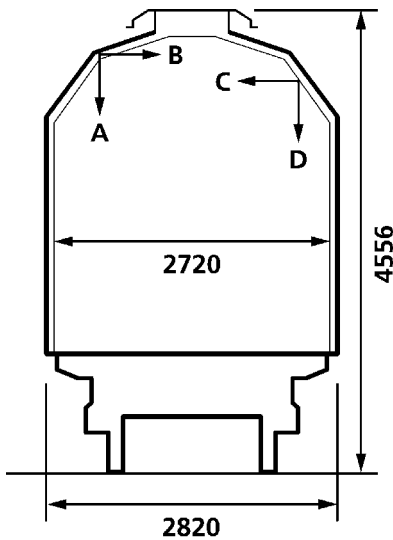
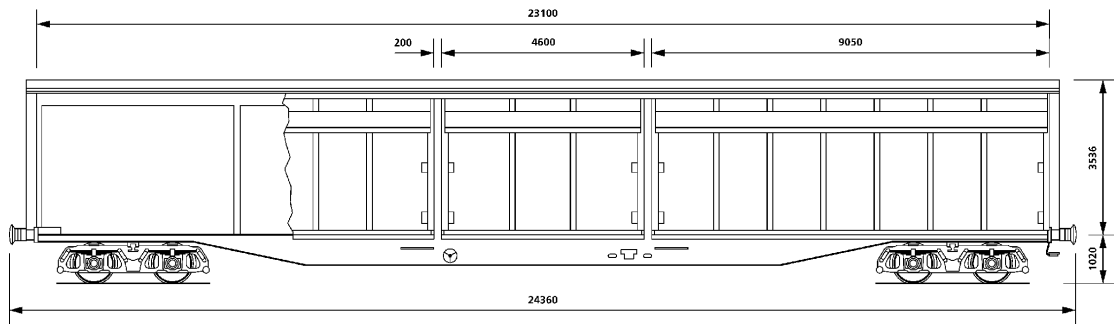


Wagon is specially designed for high volume also low loading height and therefore only authorized in some countries (please refer to attached list).

3 sliding walls per wagon side give access to the complete floor area from both sides and facilitate the loading/unloading by fork lift truck from ground level.

Wagon has been designed for an even distribution of load on the wagon floor.

The maximum wheel pressure on the floor board is 5 tonnes.



Refer to separate table for height and width dimensions

Wagon Data

Overall length (over buffers)	24.360mm
Overall height	4.556mm
Loading length	23.100mm
Loading width	2.720mm
Loading area	63m2
Loading capacity	192m3
Length of door openings (3 doors)	
Outer doors	9.050mm
Middle door	4.600mm
Height of door openings	3.230mm
Platform height	1.020mm
Tare weight	26.500 kgs
Payload ca.	37.500 kgs
Minimum curve	95 metres
Maximum speed	100 kph

Payload	A	B	C	
S		37.5		**

GE107

Habbis 6

Measurements in wall area (A – B)	
Height above wagon floor(mm)	Loading width (mm)
1 2462	2720
2512	2650
2562	2580
2612	2510
2662	2440
2712	2370
2762	2300
2812	2230
2862	2160
2912	2090
2962	2020
3012	1950
3062	1880
2 3063.5	1878
3113.5	1603
3163.5	1328
3215.5	1053
3 3250	964

Measurements in roof support area (C – D)	
Height above wagon floor(mm)	Loading width (mm)
1 2400	2720
2450	2650
2500	2580
2550	2510
2600	2440
2650	2370
2700	2300
2750	2230
2800	2160
2850	2090
2900	2020
2950	1950
3000	1880
2 3015	1860
3065	1527.5
3115	1195
3165	862.5
3215	530
3 3230	430

GE107

Habbis 6

Gattung	Wagennummern-Kreis	zugestimmte Bahnverwaltungen	Einschränkungen										
			1	2	3	4	5	6	7	8	9	10	
Habbis 6	83 80 277 3000-4 bis 3049-1	BDZ,DSB,NS,CFR,GC,CD,ÖBB,M ÀV,PKP, SZ,MZ,JZ,HZ, ZSR,CH,CFL			SNCF					SNCF			FS,SBB

Achtung! : die Spalten 3, 7,8 und 10 werden nicht im Vereinbarungsraster angebracht !

- 1) With 22.5 Tons only 90 Km/h
- 2) GC only B Profile or less
- 3) Kehl-Strassbourg-Kehl
- 4) Not via Finland (VR) to Continent
- 5) Max axle 20t
- 6) Beladevorschriften
- 7) als außergewöhnliche Sendung
- 8) Ausnahmebeförderung nach ständiger Genehmigung TES 1304
- 9) keine 22,5 t
- 10) abgelehnt