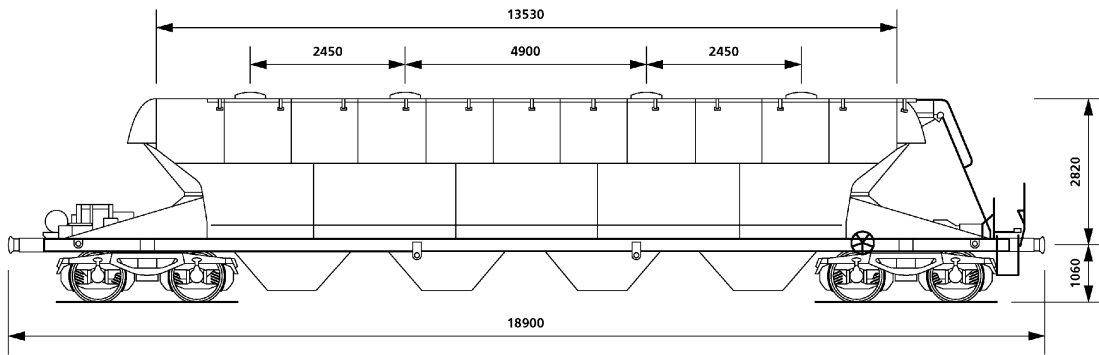


These wagons were built in 1989 in France. They are internationally registered and are approved for Channel tunnel transit.

The wagons meet existing RIV / RID / UIC regulations and have been designed primarily for the conveyance of powdered products. The wagons feature an air discharge system, and also two products of a similar density may be carried.



Wagon Data

Overall length (over buffers)	18.900mm
Overall width	2.640mm
Tare weight	25.600 kgs
Payload (axle load 22.5 tonnes)	64.400 kgs
Minimum curve	35 metres
Maximum speed	100 kph
Maximum capacity	74m3
Pressure (Test)	3.0 Bar
Pressure (Working)	2.0 Bar

Payload	A	B	C	D
S	38.4	46.4	56.4	64.4
120	0.0			

GE306

Powder Tank