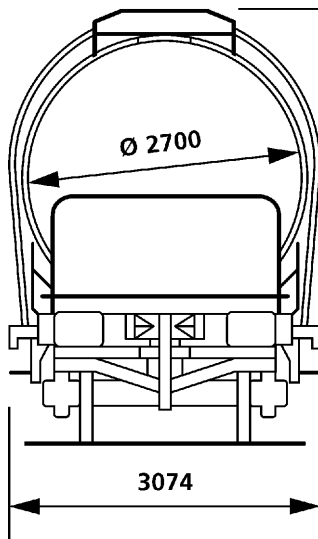
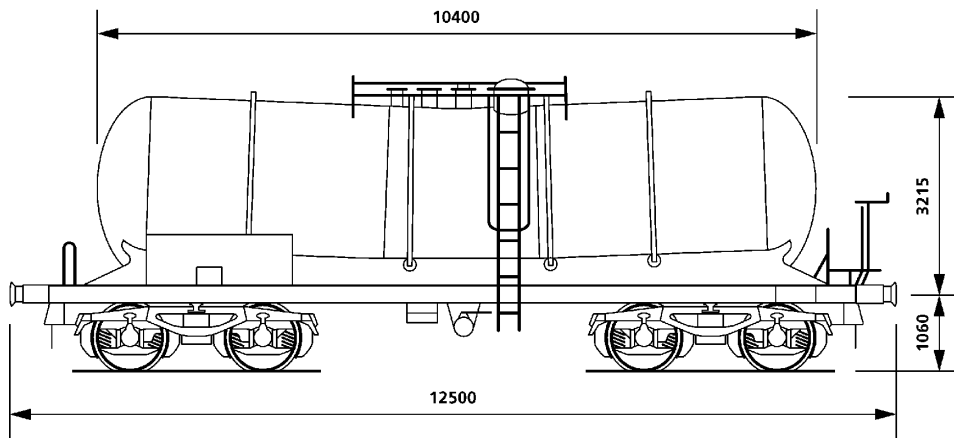


These wagons were constructed during 1988. They are internationally registered with the SNCF for use in mainland Europe only.

The wagons meet existing RIV / RID / UIC regulations and have been designed primarily for the conveyance of Phosphoric Acid or other compatible chemical products.



Wagon Data

<i>Overall length (over buffers)</i>	12.500mm
<i>Overall height</i>	4.275mm
<i>Overall width</i>	3.074mm
<i>Tare weight</i>	21.400 kgs
<i>Payload (axle load 22.5 tonnes)</i>	68.600 kgs
<i>Minimum curve</i>	35 metres
<i>Maximum speed</i>	100 kph
<i>Maximum capacity</i>	52m3
<i>Barrel length</i>	10.400mm
<i>Barrel Lining material</i>	ZZCND 17.13
<i>Pressure (Test)</i>	6.0 Bar
<i>Pressure (Working)</i>	4.0 Bar

Payload	A	B1	B2	C	D2	D3	D4
90	38.6	41.1	50.6	58.6	58.6	68.6	
S	38.6	41.1	50.6	58.6			
120	0.0						

GE303

Phosphoric Acid Tank