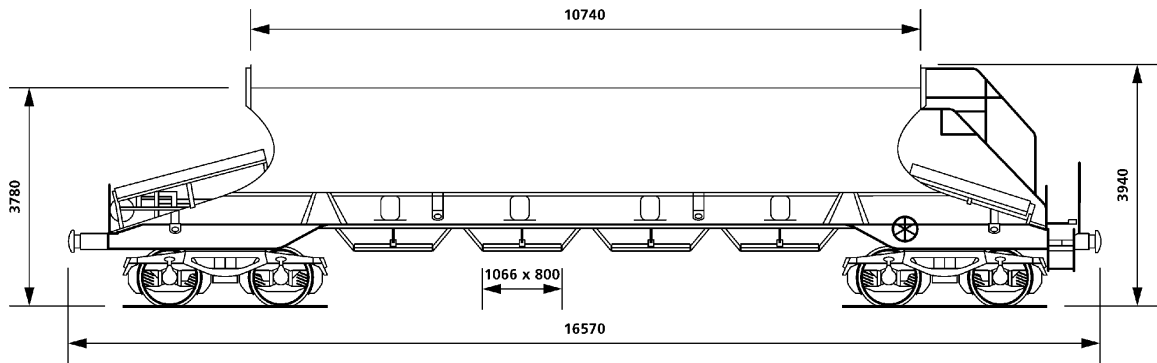


These 90 tonne gross wagons were constructed by AFR France between 1988 and 1990. The wagons are UK registered but meet all existing RIV/UIC regulations. They are also approved for Channel Tunnel transit subject to the fitting of retractable canopies.

The wagons have been designed primarily for the conveyance of aggregates and sand.



Wagon Data

Overall length (over buffers)	16.570mm
Overall width	2.718mm
Overall height	3.940mm
Loading length (aperture)	10.740mm
Loading width (aperture)	1.860mm
Cubic capacity	48m³
Tare weight	23.500 kgs
Payload (axle weight 22.5 tonnes) ca.	66.500 kgs
Minimum curve	35 metres
Maximum speed	100 kph

Payload	A	B	C	D
90	40.6	48.6	58.6	66.6
S	40.0	48.0	58.0	
120	0.0			

GE500CT

Aggregate Hopper