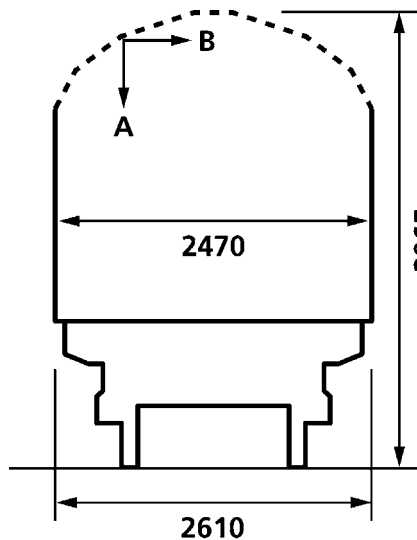
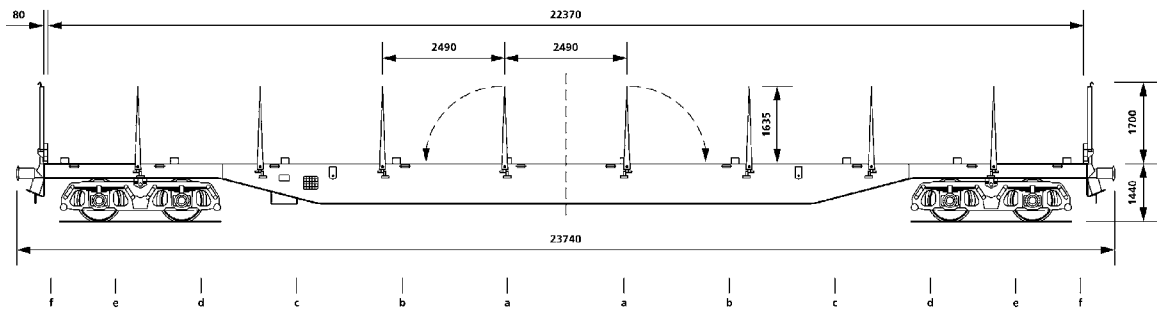


This wagon is specially designed for longer loads.
goods. For authorized countries please refer to attached list.
Goods can be distributed evenly in this flat wagon.
The maximum wheel pressure on the floor boards is 5 tons.
Wagon is fitted with turnover bolsters.
The wagon has 8 collapsible stanchions per side. Those are each fitted with a hook for load security purpose.
Winches are also fitted to enable tensioned strap security.
The head stanchions are removable and can be deposited in specially fitted stanchion holds.
The headboards are collapsible and the wagon can be loaded/unloaded from head ramps.



Wagon Data

Overall length (over buffers)	23.740mm
Loading length	22.340mm
Loading width	2.470mm
Platform height	1.365mm
Height of side stanchions	1.700mm
Height of head stanchions	1.700mm
Height of head boards	400mm
Height of bolsters	65mm
Tare weight	26.200 kgs
Payload (D – line)	63.500 kgs
Minimum curve	50 metres
Maximum speed	100 kph

mensions

Payload	A	B	C	D	
S	37.5	45.5	55.5	63.5	**
120	0.00				

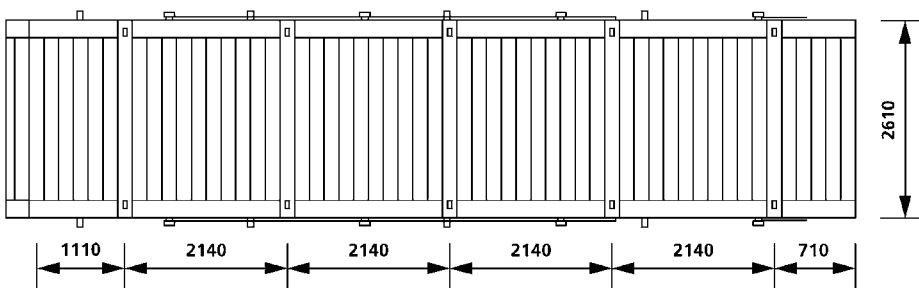
GE204CT

Sfpns 4

Height above rail (mm)	Related $\frac{1}{2}$ width (mm)	Height above rail (mm)	Related $\frac{1}{2}$ width (mm)	Height above rail (mm)	Related $\frac{1}{2}$ width (mm)
3.080	1.410	3.380	1.274	3.680	891
3.090	1.407	3.390	1.265	3.690	877
3.100	1.404	3.400	1.256	3.700	864
3.110	1.401	3.410	1.247	3.710	850
3.120	1.398	3.420	1.238	3.720	836
3.130	1.395	3.430	1.229	3.730	822
3.140	1.392	3.440	1.220	3.740	809
3.150	1.389	3.450	1.206	3.750	795
3.160	1.386	3.460	1.193	3.760	765
3.170	1.383	3.470	1.179	3.770	735
3.180	1.380	3.480	1.165	3.780	705
3.190	1.378	3.490	1.151	3.790	675
3.200	1.375	3.500	1.138	3.800	646
3.210	1.372	3.510	1.124	3.810	616
3.220	1.369	3.520	1.110	3.820	586
3.230	1.366	3.530	1.097	3.830	556
3.240	1.363	3.540	1.083	3.840	526
3.250	1.360	3.550	1.069	3.850	496
3.260	1.357	3.560	1.055	3.860	466
3.270	1.354	3.570	1.042	3.870	436
3.280	1.351	3.580	1.028	3.880	407
3.290	1.348	3.590	1.014	3.890	377
3.300	1.345	3.600	1.001	3.900	347
3.310	1.336	3.610	987	3.910	317
3.320	1.327	3.620	973	3.920	287
3.330	1.318	3.630	960	3.930	257
3.340	1.309	3.640	946	3.940	227
3.350	1.300	3.650	932	3.950	197
3.360	1.291	3.660	918	3.960	167
3.370	1.283	3.670	905		

Distribution of load		
Loading Length	On floor	On bolsters
a-a 2.2m	23t	28t
b-b 6.5m	30t	38t
c-c 10.8m	33t	51t
d-d 15.0m	41t	54t
e-e 19.3m	51t	62.5t
f-f 22.4m	62.5t	45t
d-c 3m	31.5t	---

Sfns 4



GE204CT

Sfns 4

Gattung	Wagennummern-Kreis	zugestimmte Bahnverwaltungen	Einschränkungen											
			1	2	3	4	5	6	7	8	9	10		
Sfpns 4	83 80 473 6100-4 bis 6149-1	SZ,GySEV,NSB,EWS,CD,ÖBB,SN CB,CFL,JZ,SNCF,DSB,MÄV,RAI, TCDD,FS,SBB,PKP,NS,MZ,ZSR				GC								

Achtung! : die Spalten 3, 7,8 und 10 werden nicht im Vereinbarungsraster angebracht !

- 1) With 22.5 Tons only 90 Km/h
- 2) GC only B Profile or less
- 3) Kehl-Strassbourg-Kehl
- 4) Not via Finland (VR) to Continent
- 5) Max axle 20t
- 6) Beladevorschriften
- 7) als außergewöhnliche Sendung
- 8) Ausnahmbeförderung nach ständiger Genehmigung TES 1304
- 9) keine 22,5 t
- 10) abgelehnt