

Wagon is fully RIV approved for Continental Europe and UK channel traffic with the exception of Spain, Portugal and Finland.

Loads can be distributed evenly in this flat wagon.

The maximum wheel pressure on the floor boards is 5 tons.

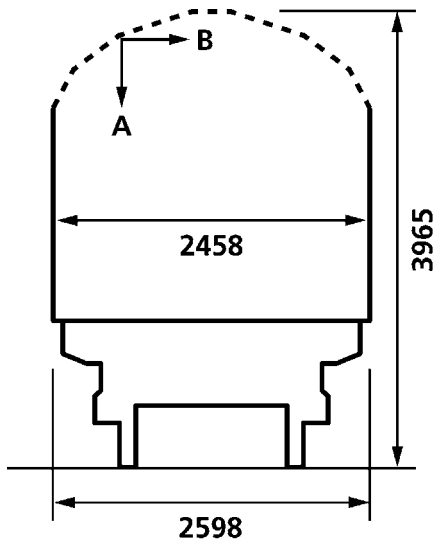
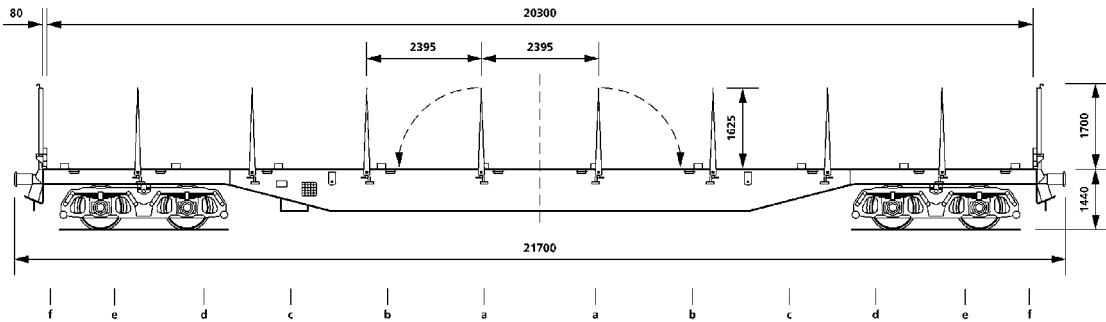
Wagon is fitted with turnover bolsters.

The wagon has 8 collapsible stanchions per side. Those are each fitted with a hook for load security purpose.

Winches are also fitted to enable tensioned strap security.

The head stanchions are removable and can be deposited in specially fitted stanchion holds.

The headboards are collapsible and the wagon can be loaded/unloaded from head ramps.



Wagon Data

Overall length (over buffers)	21.700mm
Loading length	20.300mm
Loading width	2.458mm
Platform height	1.440mm
Height of side stanchions	1.635mm
Height of head stanchions	1.700mm
Height of head boards	400mm
Height of bolsters	65mm
Tare weight	25.000 kgs
Payload (C – line)	57.000 kgs
Payload (D – line)	65.000 kgs
Minimum curve	50 metres
Maximum speed	100 kph

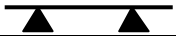
Refer to separate table for height and width dimensions

Payload	A	B	C	D	
S	39	47	57	65	**
120	0.00				

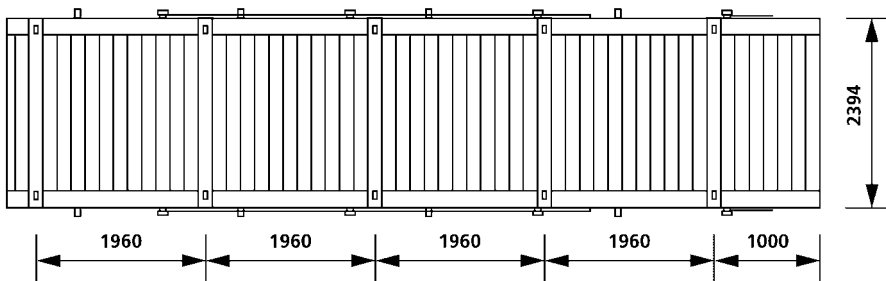
GE203CT

Sfpns 3

Height above rail (mm)	Related $\frac{1}{2}$ width (mm)	Height above rail (mm)	Related $\frac{1}{2}$ width (mm)	Height above rail (mm)	Related $\frac{1}{2}$ width (mm)
3.140	1.271	3.420	1.126	3.700	763
3.150	1.266	3.430	1.121	3.710	749
3.160	1.261	3.440	1.109	3.720	736
3.170	1.256	3.450	1.095	3.730	723
3.180	1.251	3.460	1.081	3.740	709
3.190	1.246	3.470	1.068	3.750	696
3.200	1.241	3.480	1.055	3.760	666
3.210	1.235	3.490	1.041	3.770	636
3.220	1.230	3.500	1.028	3.780	606
3.230	1.225	3.510	1.015	3.790	576
3.240	1.220	3.520	1.001	3.800	547
3.250	1.215	3.530	988	3.810	517
3.260	1.209	3.540	975	3.820	487
3.270	1.204	3.550	962	3.830	457
3.280	1.179	3.560	948	3.840	427
3.290	1.194	3.570	935	3.850	397
3.300	1.189	3.580	922	3.860	367
3.310	1.183	3.590	909	3.870	327
3.320	1.178	3.600	895	3.880	307
3.330	1.173	3.610	882	3.890	278
3.340	1.168	3.620	869	3.900	248
3.350	1.163	3.630	856	3.910	218
3.360	1.157	3.640	842	3.920	188
3.370	1.152	3.650	829	3.930	158
3.380	1.147	3.660	816	3.940	128
3.390	1.142	3.670	803	3.950	98
3.400	1.137	3.680	789	3.960	69
3.410	1.131	3.690	776	3.965	53

Distribution of load		
Loading Length	On floor	
a-a 2.0m	32.0t	18t
b-b 5.9m	38.0t	22t
c-c 9.8m	45.0t	27.5t
d-d 13.7m	50.0t	30t
e-e 17.6m	60.0t	32t
f-f 20.0m	65.0t	30t
c-e 3.9m	32.5t	15t

Sfpns 3



GE203CT

Sfpns 3